

MULTISPORTS PHOTO FINISH

OMEGA SCAN'O'VISION STAR series

This photo finish camera system measures in thousandths of seconds the times at the finish line. It is designed to accommodate a wide range of sports, including athletics, horse racing, greyhounds, rowing, cycling and speed skating competitions.

Overview

This camera takes up to 2000 shots per second at a high resolution of 2048 pixels vertical line, and the corresponding time is displayed on each picture. The high sensitivity of the sensors allows the STAR to work in poor light conditions. High quality images allow direct export to all print and electronic media. An optional internal battery offers one hour stand alone operation in case of power failure. An integrated digital inclinometer helps positioning of the camera. The STAR 210 and 2010 include focus and iris remote control.

Thanks to an exclusive patent, a Spatial Alignment system for the 1010 and 2010 series allows the camera to be easily aligned on any finish line. STAR cameras are self-contained, including power supply, electronics, connections to the track (start, ready and finish) and computer connections through a standard Ethernet (1Gb) cable. With optional accessories, it is possible to connect the system to peripheral devices such as scoreboards and data handling computers, wind measurement and false start control devices.



The Spatial Alignment feature is visible in this picture.



OSV SCAN'O'VISION STAR and its optional carrying case with accessories.

Specifications

Lens mounting:	Nikon type
Temperatures:	0..50°C (working), -20..70°C (storage)
Protection:	IP43
Camera dimensions:	360 x 205 x 185 mm (LxHxW) (including handle, without optics)
Weight (camera only):	approx. 5 kg (without optics)
Resolution:	2048 pixels
Acquisition speed:	100 to 2000 I/s
Ethernet Gigabit:	up to 100 m cable

RoHS & CE compliant



Kit contents

- Omega Scan'O'Vision STAR camera
- Power supply
- 4 axes mounting support (tripod optional)
- Cables (10m)
- Software
- User's manuals (paper printed)

Order number

3434.922: OMEGA SCAN'O'VISION STAR 110	✓		
3434.923: OMEGA SCAN'O'VISION STAR 210	✓		✓
3434.934: OMEGA SCAN'O'VISION STAR 1010	✓	✓	
3434.935: OMEGA SCAN'O'VISION STAR 2010	✓	✓	✓

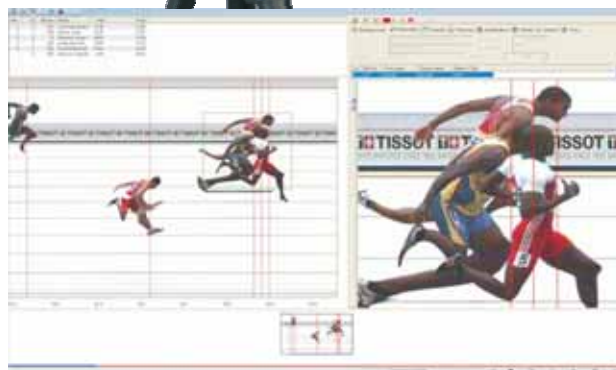
All standard features

Spatial alignment

Iris and focus remote control



Examples of STAR Photofinish resulting screens



All the information contained in this document can be modified without warning. Swiss Timing LTD cannot be made responsible for any errors contained in this document or for any damage secondary or consequent (including the loss of profits) arising from the supplying, performance or use of this product, whether it be on the base of a guarantee, a contract or any other legal ground.

Options

Note: all the proposed lenses can be remote controlled

9051.6251: Zoom lens 15-30mm f/3.5-4.5D please check availability

9051.6252: Zoom lens 24-70mm f/2.8 - 4.5D

9051.6253: Zoom lens 70-300mm f/4 - 5.6D

9051.6254: Zoom lens 170-500mm f/5 - 5.6D

2872.003: OMEGA OIT3 pushbutton

3434.640: OMEGA SCAN'O'VISION STAR carrying case for camera, lenses, cables and 4 axes camera mounting

3434.990: USB interface for 2x RS232 and 2x RS422

3330.618: Cable for external battery

9051.6319: Tripod Trispecial black

3397.907: Dedicated Laptop PC

3397.927: Dedicated Desktop PC

3434.980: OMEGA SCAN'O'VISION STAR internal battery

3434.525.02.RA

SWISS TIMING LTD

A COMPANY OF THE SWATCH GROUP

P.O. Box 138, Rue de l'Envers 1
CH-2606 Corgémont - Switzerland
www.swisstiming.com

Phone +41 32 488 36 11
Fax +41 32 488 36 09
info@swisstiming.com